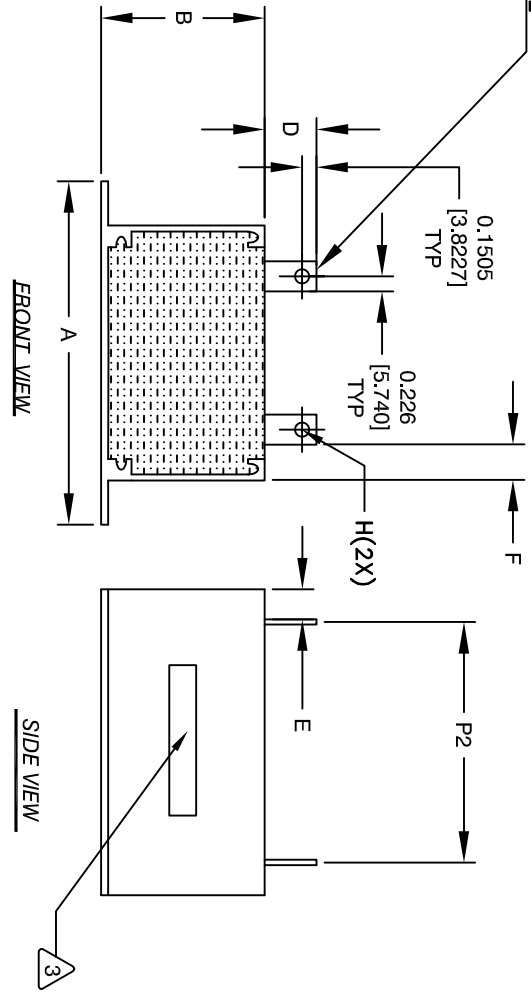
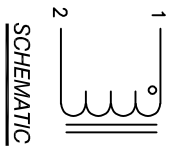


REVISION HISTORY

REV	ECN	DESCRIPTION	BY	DATE	CHK	DATE
A	131030	PRODUCTION RELEASE	AK	07/05/16	BO	07/05/16
A1	010524	UPDATED DIMENSION OF HOLES ON LEADS	AK	01/05/24	JL	01/05/24

RING TERMINAL ARE OPTIONAL



DIMENSIONS

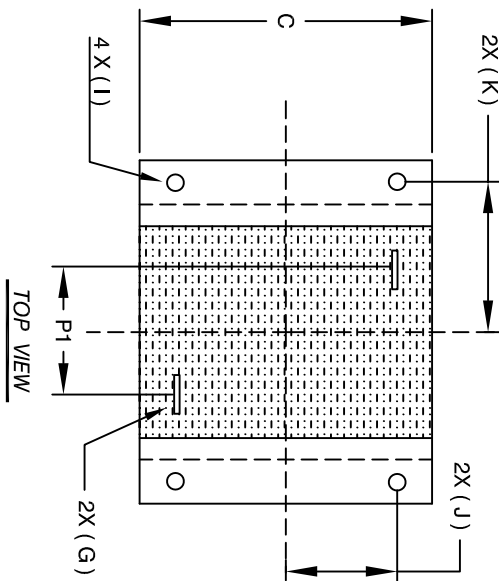
	mm	In
A	85.60±0.51	3.37±0.02
B	40.13±1.27	1.58±0.05
C	61.21±1.27	2.41±0.05
D	11.43 Ref.	0.45 Ref.
E	13.46 Ref.	0.53 Ref.
F	11.18 Ref.	0.44 Ref.
G	0.9x6.0 Ref.	0.04X0.23 Ref.
H	2.72 Min.	0.107 Min.
I	4.06 Min.	0.160 Min.
J	20.50±0.38	0.81±0.015
K	37.00±0.38	1.457±0.015
P1	29.96 Ref.	1.14 Ref.
P2	34.29 Ref.	1.35 Ref.

- APPLICATION: ENERGY STORAGE FILTER, SWINGING CHOKE
- BUILT TO ROHS COMPLIANCE.
- MARK PART NUMBER AND REVISION WHERE SHOWN

WEIGHT: 510 GRAM (TYP)
 MAX INDUCTOR TEMP RATING: 200°C
 APPROPRIATE AIR FLOW.
 RECOMMENDED AMBIENT OPERATING TEMP: -40°C TO 85°C WITH HI-POT TEST 1000VDC @ 2mA, 1 MIN. TERMINALS TO CASE INTERWINDING CAPACITANCE @ 10KHZ = 17.4pF (TYP)
 |z|@SRF=5.5 KILO-OHM (TYP)
 SRF=2.5 MHz (TYP)
 RATED CURRENT: 50 AMPS
 DCR = 10 MILLIOHM MAX.
 L@DC BIAS: SEE TABLE
 L = 220 uH ± 15% AT 10 KHZ, 0.25V, ZERO DC BIAS

- SPECIFICATIONS:
 ENCLOSURE: ALUMINUM METAL
 WIRE: 200°C RATED MAGNET WIRE UL APPROVED
 CORE: POWDER CORE
- MATERIALS:

NOTES: UNLESS OTHERWISE SPECIFIED, READ FROM BOTTOM UP.
 CAGE CODE: 5DME2



DC-BIAS	L
0A	222 uH
5A	221 uH
10A	218 uH
15A	211 uH
20A	201 uH
25A	182 uH
30A	171 uH
35A	157 uH
40A	139 uH
45A	126 uH
50A	112 uH

QTY	CODE	MFG. P/N	DESCRIPTION	ITEM NO.
	IDENT			

AUTOCAD	SIGN	DATE	DATE	DATE

UNLESS OTHERWISE SPECIFIED	UNLESS OTHERWISE SPECIFIED
DIMENSIONING AND TOLERANCE PER ANSI Y14.5M	DIMENSIONING AND TOLERANCE PER ANSI Y14.5M
ALL DIMENSIONS ARE IN INCHES AND [MILLIMETERS]	ALL DIMENSIONS ARE IN INCHES AND [MILLIMETERS]
TOLERANCE INCHES: .XXX±.010 .XX±.020	TOLERANCE INCHES: .XXX±.010 .XX±.020
TOLERANCE METRICS: .XX±.025 .X±.051	TOLERANCE METRICS: .XX±.025 .X±.051
ANGLE PROJECTION	ANGLE PROJECTION

REV	DATE	BY	DATE	CHK	DATE
A	01/05/24	AK	07/05/16	BO	07/05/16
A1	01/05/24	AK	01/05/24	JL	01/05/24

SCALE	NOT_TO_SCALE	SHEET	OF	REV
A		1	1	A1

High Current Helical Inductor
 220 uH, 50 Amps, Horizontal

www.coilw.com
 353 W GROVE AVE
 ORANGE, CA 92665

DATE	DATE	DATE
7/29/16	7/29/16	7/29/16

DATE	DATE	DATE
7/29/16	7/29/16	7/29/16

DATE	DATE	DATE
7/29/16	7/29/16	7/29/16

DATE	DATE	DATE
7/29/16	7/29/16	7/29/16

DATE	DATE	DATE
7/29/16	7/29/16	7/29/16

DATE	DATE	DATE
7/29/16	7/29/16	7/29/16

DATE	DATE	DATE
7/29/16	7/29/16	7/29/16

DATE	DATE	DATE
7/29/16	7/29/16	7/29/16